

Masonry & Cavity Fixings

Cavity Fixings

Corefix	84
Zip-Fix	85
Stella-Fix	86
Spring Toggles	87
Metal Cavity Anchors	87
Speed Plugs	87
Hammer-In Fixings	88

Masonry & Insulation Fixings

Plastic, Nylon & Metal Plugs	88
Express Nails	90
Wirehangers	90
Ceiling Anchor & Bracket	90
Vertical Flange Clips	90
Metal Insulations Fixings	91
Plastic Insulation Fixings	91
Discs & Covers	91

Concrete & Masonry Fixings

Zamac Nail In Anchors	92
Nylon Fixings	92
Masonry Screws	93
Concrete Screws	94
Masonry Bolts	96
Throughbolts	98
Drop In Anchors	98
Shield Anchors	99
Chemical Anchor Studs	100

Chemical Resin & Accessories

Chemical Resin	101
Accessories	102

Anchors & Fixings

Quick Reference Guide

Zip-Fix	
Stella-Fix	
Corefix	
Metal Cavity Anchors	
Spring Toggles	
Speed Plugs	
Hammer-In Fixings	
Plastic Plugs	
Nylon Universal plugs	
Plugs & Coach Screws	
Metal Expansion Plug	
Express Nails	
Wirehangers	
Ceiling Anchors	
Insulation Fixings	
Nail in Anchors	
Nylon Hammer Fixings	
Nylon Frame Fixings	
Masonry Bolts	
Concrete Screws	
Masonry Screws	
Throughbolts	
Drop-In Anchors	
Shield Anchors	
Chemical Studs *	
Resin	

	Concrete ≥ 25 N/mm ²	Concrete (Hollow) ≥ 15 N/mm ²	Fletton Brick ≥ 30N/mm ²	Solid Cheshire Clay Brick ≥ 45N/mm ²	Class 'B' Engineering Brick (3 x hole) ≥ 75 N/mm ²	Dense Solid Concrete Block 7.3 N/mm ²	Stone Various Strengths	Plasterboard All thicknesses/strengths	Wood Panel i.e. chip/block board
	Concrete		Masonry					Panel	
Zip-Fix		✓						✓	✓
Stella-Fix	✓	✓	✓	✓	✓	✓	✓	✓	✓
Corefix								✓	
Metal Cavity Anchors								✓	✓
Spring Toggles		✓						✓	✓
Speed Plugs								✓	
Hammer-In Fixings								✓	
Plastic Plugs	✓		✓	✓	✓	✓	✓		
Nylon Universal plugs	✓	✓	✓	✓	✓	✓	✓	✓	✓
Plugs & Coach Screws									
Metal Expansion Plug	✓								
Express Nails	✓		✓	✓	✓	✓	✓		
Wirehangers	✓								
Ceiling Anchors	✓								
Insulation Fixings	✓		✓	✓	✓	✓	✓		
Nail in Anchors	✓						✓		
Nylon Hammer Fixings	✓		✓	✓	✓	✓	✓		
Nylon Frame Fixings	✓		✓	✓	✓	✓	✓		
Masonry Bolts	✓		✓	✓	✓	✓	✓		
Concrete Screws	✓		✓	✓	✓	✓	✓		
Masonry Screws	✓		✓	✓	✓	✓	✓		
Throughbolts	✓								
Drop-In Anchors	✓								
Shield Anchors	✓		✓	✓	✓		✓		
Chemical Studs *	✓	✓	✓	✓	✓	✓	✓		
Resin	✓		✓	✓	✓	✓	✓		

Recommended Tensile Loads

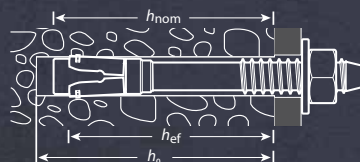
Recommended loads quoted by TIMco are the maximum loads that may be applied in the base material as quoted. Applied loads (unfactored loads) may not exceed these values. (in BS 8539:2012 code of practice for the selection and installation of post-installed anchors in concrete and masonry, recommended loads are referred to as recommended resistances and applied loads as characteristic actions.)

TIMco determines recommended loads from results achieved in their testing facility. Recommended loads are determined from the Characteristic Load ($x - k_s$) divided by a safety factor.

Recommended loads depend on anchors being correctly installed, as per the provided installation instructions, in material of at least the quoted strength and to at least the quoted embedment depth. Recommended loads for masonry are guide values only.

Embedment depths & hole depths

Where embedment depths are quoted in this brochure they refer to the "Nominal embedment depth" of the anchor in the hole, referred to in BS 8539:2012, with the notation.



The minimum hole depth is measured to the shoulder of the drill bit, h_o as per BS 8539, and is valid for the maximum fixture thickness. When using throughbolts, Multi-Fix bolts, shield anchors, nylon frame and nylon hammer fixings, the hole depth should be increased pro rata for thinner fixtures.

Edge distance & centre spacings

In this brochure the dimensions shown under these headings are the distances for which the full recommended load as quoted here may be used (BS 8539 references are: Edge distance, c_{cr} , and Centre spacing, s_{cr}).

For some products closer edge and centre spacings may be used with reduced loads, refer to our Technical Department for details.

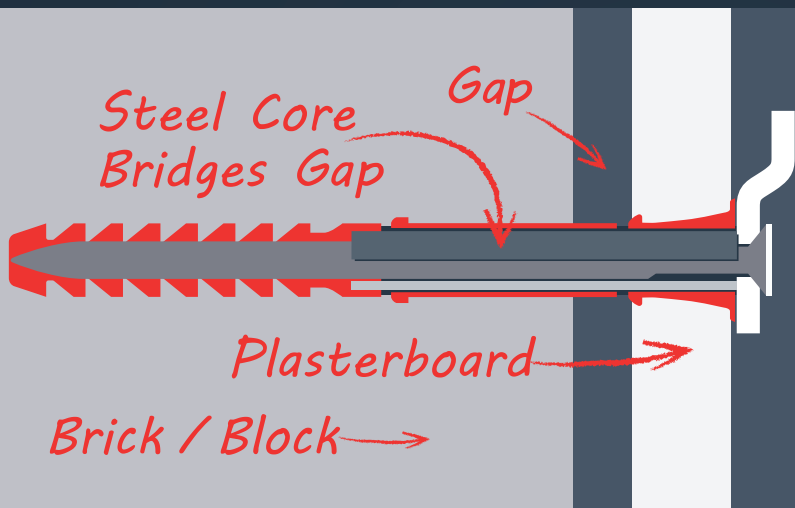
TIMCO

COREFIX

Dot & Dab Wall Fixing Solved!

✓ Lightweight/thermal blockwork

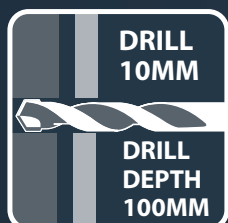
✓ All types of brick & blockwork



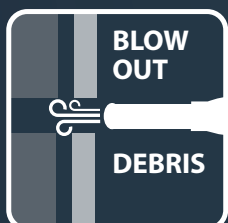
COREFIX is suitable for mounting TVs, radiators and cabinets onto Dot & Dab walls, plasterboard over all types of brick and blockwork.



INSTALL IN JUST 5 EASY STEPS!



1. Drill hole to required depth using 10mm masonry drill bit. Turn off hammer drill for aerated blocks.



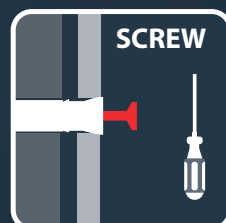
2. Blow to ensure all debris and dust has been removed from the hole.



3. Gently tap plug into place until flange contacts the plasterboard.



4. Then tap metal core into place.



5. Screw fixture to the wall with supplied screw.

COREFIX 100

5.0 x 100mm Screw
Max Fixture Thickness - 10mm

Available in:

Box of 24
Code: CFX024T

Pack of 4
Code: CFX004T

Clamshell of 6
(Drill bit included)
Code: CFX006RVT



COREFIX 120

5.0 x 120mm Screw
Max Fixture Thickness - 30mm

Available in:

Box of 24
Code: CFX024PT

Pack of 4
Code: CFX004PT



Timber Battons



Shelves

Warning: Always check for cables and pipes before drilling and use suitable protective equipment.

ZIP-FIX[®]

CAVITY FIXING

RAPID INSTALLATION

Heavy duty cavity wall anchor for use in plasterboards, most hollow concrete blocks, cavity walls and ceilings.

Pack includes both 40mm and 60mm screws for a wider variety of fixture thicknesses.

WEIGHTS & MATERIALS

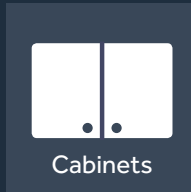
30 KG
DRYWALL / PLASTERBOARD
 12.5mm Thickness

47 KG
DOUBLE BOARD
 25mm Thickness

56 KG
DENSE BOARD
 15mm Thickness

Up To
60KG
HOLLOW BLOCK

PERFECT FOR FITTING



TECHNICAL DATA

Substrate	Plasterboard 12.5mm Thickness	25mm Double Board	15mm Dense Board	Block
Thread Ø (mm)	M6	M6	M6	M6
Drill Hole Ø (mm)	13	13	13	13
Rec. Tensile Load (kN)	0.30	0.47	0.56	0.60
Max Rec. Load (kg)	30	47	56	60

Product Code	Screw Length (mm)	Thread Ø (mm)	FCH Ø (mm)	MFT (mm)	Pack Qty (pcs)	Carton Qty (packs)	Pallet Qty (packs)
--------------	-------------------	---------------	------------	----------	----------------	--------------------	--------------------

BOX

ZIP650	40 and 60	M6	6	45	50	8	192
--------	-----------	----	---	----	----	---	-----

TYPE - ANC SUB TYPE - ANC03 FCH = Fixture Clearance Hole. MFT = Max. Fixture Thickness

Product Code	Screw Length (mm)	Thread Ø (mm)	FCH Ø (mm)	MFT (mm)	Pack Qty (pcs)	Carton Qty (packs)	Pallet Qty (packs)
--------------	-------------------	---------------	------------	----------	----------------	--------------------	--------------------

BAG

ZIP6	40 and 60	M6	6	45	10	42	1260
------	-----------	----	---	----	----	----	------

TYPE - ANC SUB TYPE - ANC03 FCH = Fixture Clearance Hole. MFT = Max. Fixture Thickness

DRILL



Drill a 13mm hole in the substrate. 50mm cavity clearance required behind substrate.

PUSH



Ensuring the thumb tab faces upwards, insert the metal toggle through the hole, so it pivots down behind the substrate.

ZIP



Zip the nylon collar towards the wall so the collar sits into the drilled hole. Then snap off the nylon arms.

FIX



Insert a M6 screw through the fixture and into the threaded part of Zip-Fix and tighten until secure.

STELLA-FIX

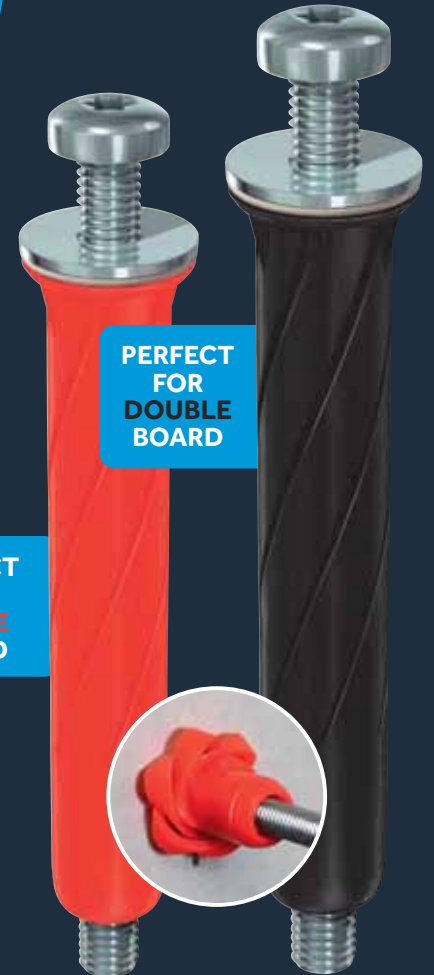
UNIVERSAL ANCHOR

EASY INSTALLATION, JUST **PUSH & FIX**

A highly effective universal anchor for fixing heavy loads to plasterboard, cavities and solid materials.

TECHNICAL DATA

Substrate	Plasterboard 12.5mm Thickness	Dense board 15mm Thickness	Double board 25mm Thickness
Anchor Type	Red	Red	Black
Anchor Length (mm)	49	49	59
Drill Hole Ø (mm)	10	10	10
Rec. Tensile Load (kN)	0.33	0.41	0.48
Max Rec. Load (kg)	33	41	48



PERFECT
FOR
DOUBLE
BOARD

PERFECT
FOR
SINGLE
BOARD

WEIGHTS & MATERIALS

33
KG

**DRYWALL /
PLASTERBOARD**
12.5mm
Thickness

41
KG

**DOUBLE
BOARD**
25mm
Thickness

Up To
48
KG

**DENSE
BOARD**
15mm
Thickness

PERFECT FOR FITTING



TV Brackets



Radiators



Cabinets

Product Code	Screw Size (mm)	Plug Length (mm)	Board Thickness (mm)	MFT (mm)	Pack Qty (pcs)	Carton Qty (packs)	Pallet Qty (packs)
BOX							
RED FIXING							
STRED55	M5 x 55	49	3 - 18	15	25	20	1200
STRED80	M5 x 80	49	3 - 18	40	25	10	800
BLACK FIXING							
STBLACK65	M5 x 65	59	18 - 30	12	25	20	1200
STBLACK90	M5 x 90	59	18 - 30	38	25	10	800

TYPE - ANC SUB TYPE - ANC04

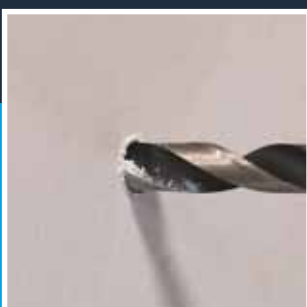
MFT = Max Fixture Thickness.

Product Code	Screw Size (mm)	Plug Length (mm)	Board Thickness (mm)	MFT (mm)	Pack Qty (pcs)	Carton Qty (packs)
PACK						
RED FIXING						
725374	M5 x 55	49	3 - 18	15	4	5
725146	M5 x 80	49	3 - 18	40	4	5
BLACK FIXING						
725012	M5 x 65	59	18 - 30	12	4	5
725973	M5 x 90	59	18 - 30	38	4	5

TYPE - PAK SUB TYPE - PAK47

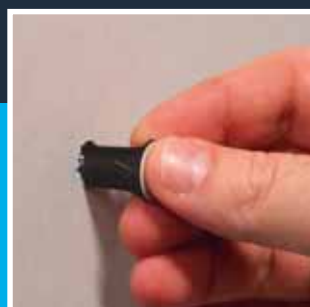
MFT = Max Fixture Thickness.

DRILL



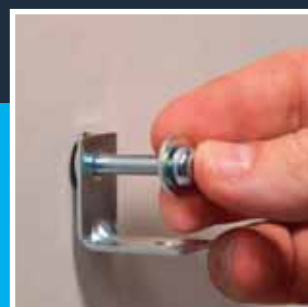
Drill a 10mm hole in the substrate.

PUSH



Push the Stella-Fix plug firmly into the hole.

INSERT



Insert the Stella-Fix screw through the fixing.

FIX



Tighten the screw until the fixing is secure.

Cavity Fixings



Spring Toggles

Zinc

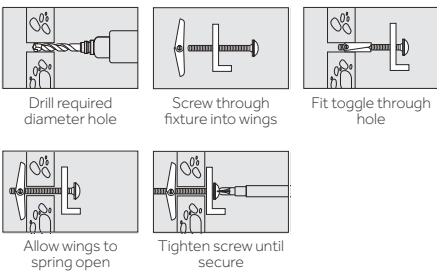


A cavity fixing that is ideal for overhead installations. The wings spread the load over a wider area making them more suited for heavier loads.

11 - 26KG

Technical Data

Substrate	Plasterboard 12.5mm Thickness		
	M3	M5	M6
Screw Ø (mm)	11	14	18
Drill Hole Ø (mm)	20	30	30
Min. Cavity Depth (mm)	0.11	0.22	0.26
Max Rec. Load (kg)	11	22	26



Product Code	Screw Ø x L (mm)	Wall & Fixture Thickness (mm)	Pack Qty (pcs)	Carton Qty (packs)	Pallet Qty (packs)
--------------	------------------	-------------------------------	----------------	--------------------	--------------------

BOX

TOG350	M3 x 50	30	100	12	240
TOG550	M5 x 50	20	100	12	192
TOG575	M5 x 75	45	100	12	192
TOG5100	M5 x 100	70	100	6	96
TOG675	M6 x 75	45	100	6	96

TIMBAG

TOG550B	M5 x 50	20	55	5	600
TOG575B	M5 x 75	45	50	5	600

TIMPAC

TOG550P	M5 x 50	20	4	5	-
TOG575P	M5 x 75	45	4	5	-

Metal Cavity Anchors

Zinc



COMBI



DRYWALL



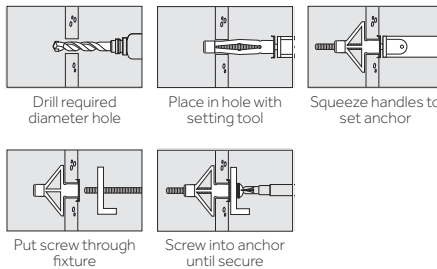
WOOD PANEL

A cavity fixing that is ideal for hanging radiators, brackets, hand rails and shelving units. When installing multiple a setting tool is recommended.

22 - 37KG

Technical Data

Substrate	Plasterboard 12.5mm Thickness		
	M4	M5	M6
Screw Ø (mm)	8.0	10.0	12.0
Drill Hole Ø (mm)	4.0	5.0	6.0
Fixt Hole Ø (mm)	0.22	0.22	0.37
Rec. Tensile Load (kN)	22	22	37
Max Rec. Load (kg)	22	22	37



Product Code	Screw Ø x L (mm)	Anchor Length (mm)	Grip Board (mm)	Pack Qty (pcs)	Carton Qty (packs)	Pallet Qty (packs)
--------------	------------------	--------------------	-----------------	----------------	--------------------	--------------------

BOX

40038CA	M4 x 45	38	8 - 16	100	20	640
40045CA	M4 x 50	45	16 - 23	100	20	640
50037CA	M5 x 45	37	6 - 13	100	20	480
50052CA	M5 x 60	52	7 - 16	100	10	320
50065CA	M5 x 70	65	17 - 32	100	10	320
60052CA	M6 x 60	52	7 - 16	100	10	320
60065CA	M6 x 70	65	17 - 32	100	10	280

TIMBAG

50037CAB	M5 x 45	37	6-13	70	5	600
50052CAB	M5 x 60	52	7-16	60	5	600
60065CAB	M6 x 70	65	17-32	40	5	600

TIMPAC

50037CAP	M5 x 45	37	6-13	4	5	-
50052CAP	M5 x 60	52	7-16	3	5	-

Setting Tool



A handy and efficient tool used to set cavity anchors.

Product Code	Pack Qty (pcs)	Carton Qty (packs)
--------------	----------------	--------------------

BOX

SETOOL	1	30
--------	---	----

Metal Speed Plugs

Zinc



CROSS



DRYWALL

A rapid light duty plasterboard fixing for use in a wide range of applications.

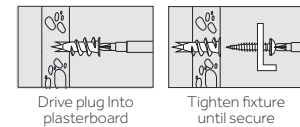
Cross-recess head allows simple installation with a screw driver.

Note: Only metal speed plugs come with screws

5 - 14KG

Technical Data

Substrate	Plasterboard 12.5mm Thickness	
	Metal	Nylon
Type		
Max. Fixture Thickness (mm)	6.0	
Rec. Tensile Load (kN)	0.14	0.05
Max Rec. Load (kg)	14	5



Product Code	Plug Length (mm)	Screw Ø x L (mm)	Pack Qty (pcs)	Carton Qty (packs)	Pallet Qty (packs)
--------------	------------------	------------------	----------------	--------------------	--------------------

BOX

TBAZS	31.5	4.5 x 30	100	20	640
-------	------	----------	-----	----	-----

TUB

TBAZST	31.5	4.5 x 30	300	20	-
--------	------	----------	-----	----	---

TIMBAG

TBAZSB	31.5	4.5 x 30	75	5	870
--------	------	----------	----	---	-----

TIMPAC

TBAZSP	31.5	4.5 x 30	5	5	-
--------	------	----------	---	---	---

Nylon Speed Plugs



Nylon speed plugs are ideal for electrical installation due to non-conductivity of nylon material.

Note: A 6mm pre-drilled hole may be required in harder plasterboards.

Product Code	Plug Length (mm)	Pack Qty (pcs)	Carton Qty (packs)	Pallet Qty (packs)
--------------	------------------	----------------	--------------------	--------------------

BOX

TBAN	42	100	10	30,000
------	----	-----	----	--------

Hammer-In Fixings

Yellow



POZI

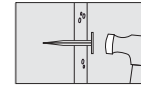


DRYWALL

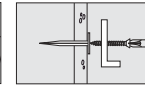
Rapid light duty plasterboard fixing with zinc plating & yellow passivation, to enhance corrosion resistance.



Technical Data	
Substrate	Plasterboard 12.5mm Thickness
Screw Size (mm)	4.0 x 30
Metal Plug Size (mm)	11 x 30
Max. Fixture Thickness (mm)	6.0
Rec. Tensile Load (kN)	0.15
Max Rec. Load (kg)	15



Hammer the metal plug into plasterboard



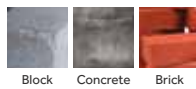
Tighten fixture until secure

Product Code	Screw Ø x L (mm)	Metal Plug Size (mm)	Pack Qty (pcs)	Carton Qty (packs)	Pallet Qty (packs)
HPF30	4.0 x 30	11.0 x 30	100	18	648
TYPE - ANP					SUB TYPE - ANP03
TIMPAC					
HPF30P	4.0 x 30	11.0 x 30	10	5	-
TYPE - PAK					SUB TYPE - PAK38

Plastic Plugs



Premium Plastic Plugs



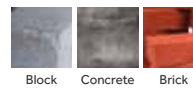
Premium plugs with improved pull-out loads and anti-rotation fins compared to standard plugs. Loose and off the sprig for quicker and more convenient installation on site.



Technical Data				
Substrate	C20/25 Concrete			
Colour	Yellow	Red	Brown	
Plug Length (mm)	25	34	42	
Drill Hole Ø (mm)*	5.0	5.5	7.0	
To Fit Screw Ø (mm)	3.0-4.5	3.5 - 4.8	4.5 - 6.0	
To Fit Screw Ø (Imp.)	4-8	6 - 10	8 - 12	
Rec.Tensile Load (kN)	0.069	0.18	0.5	
Max Rec. Load (kg)	7	18	50	
Tested using screw Ø (mm)	3.5	4.0	5.0	

* It may be beneficial to reduce drill diameter in soft materials.

Plastic Plugs



Suitable for all kinds of concrete and masonry substrate materials. Ideal for medium and lightweight applications. It may be beneficial to reduce drill diameter in soft materials.

Technical Data				
Colour	Yellow	Red	Brown	Blue
Plug Length (mm)	25	30	36	48
Drill Hole Ø (mm)*	5.0	5.5	7.0	10.0
MDHD (mm)**	30	35	45	55
To Fit Screw Ø (mm)	3.0 - 4.5	3.5 - 5.0	4.0 - 6.0	6.0 - 8.0
To Fit Screw Ø (Imp.)	4 - 8	6 - 10	8 - 12	12 - 15

* It may be beneficial to reduce drill diameter in soft materials.

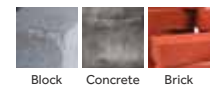
** Min. Drill Hole Depth

Boxes - Yellow, Red and Brown sold in multiples of 1000. Blue plug sold in multiples of 400.

NOW AVAILABLE IN TIMBAG

Product Code	Colour	Pack Qty (pcs)	Carton Qty (packs)	Pallet Qty (packs)
TIMBAG				
RPLUGPREM200	Red	200	5	-
BPLUGPREM200	Brown	200	5	-
TYPE - BAG				SUB TYPE - BAG25
BAG				
YPLUGPREM	Yellow	1000	40	-
RPLUGPREM	Red	1000	30	900
BPLUGPREM	Brown	1000	15	600
TUB				
RPLUGPREMT	Red	850	20	-
BPLUGPREMT	Brown	600	20	-
TYPE - PLU				SUB TYPE - PLU01

Plastic Plugs with Screws



Suitable for all kinds of concrete and masonry substrate materials. Ideal for medium and lightweight applications.

Technical Data		
Colour	Red	Brown
Plug Length (mm)	30	36
Drill Hole Ø (mm)*	5.5	7.0
Min. Drill Hole Depth (mm)	35	45
To Fit Screw Ø (mm)	3.5 - 5.0	4.0 - 6.0
To Fit Screw Ø (Imp.)	6 - 10	8 - 12

* It may be beneficial to reduce drill diameter in soft materials.

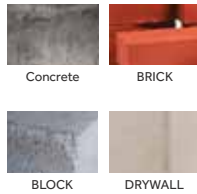
Product Code	Colour	Sprig Qty	Pack Qty (pcs)	Carton Qty (packs)	Pallet Qty (packs)
BOX (SPRIGS)					
YPLUG	Yellow	20	100	100	1200
RPLUG	Red	10	100	100	800
BPLUG	Brown	10	100	100	500
BLPLUG	Blue	10	40	100	500
TYPE - PLU					SUB TYPE - PLU01
TIMBAG (LOOSE)					
RPLUGB	Red	N/A	450	5	600
BPLUGB	Brown	N/A	300	5	600
TYPE - BAG					SUB TYPE - BAG47
TIMPAC (LOOSE)					
YPLUGP	Yellow	N/A	50	10	-
RPLUGP	Red	N/A	30	10	-
BPLUGP	Brown	N/A	20	10	-
BLPLUGP	Blue	N/A	10	10	-
TYPE - PAK					SUB TYPE - PK39

Product Code	Colour	Screw Size (mm)	Pack Qty (pcs)	Carton Qty (packs)	Pallet Qty (packs)
TIMBAG					
SRPLUGB	Red	4.0 x 40	400	5	600
SBPLUGB	Brown	5.0 x 50	250	5	600
TYPE - BAG					SUB TYPE - BAG49
TIMPAC					
SRPLUGP	Red	4.0 x 40	50	10	-
SBPLUGP	Brown	5.0 x 50	30	10	-
TYPE - PAK					SUB TYPE - PK39

Masonry Fixings



Nylon Universal Plugs



Versatile plugs manufactured from durable nylon. Superior performance in both hollow or solid materials.

Perfect for applications where there is uncertainty with regards to the type of base material.

Technical Data

Substrate	Concrete ≥25N/mm ²			Plasterboard 12.5mm Thickness**		
	6 x 30	8 x 40	10 x 50	6 x 30	8 x 40	10 x 50
Plug Size (mm)	6 x 30	8 x 40	10 x 50	6 x 30	8 x 40	10 x 50
Drill Hole Ø (mm)	6	8	10	6	8	10
Drill Hole Depth (mm)	40	50	60	-	-	-
Test Screw Size (mm)	4.5 x 40	5.0 x 50	6.0 x 60	3.5 x 40	4.0 x 50	4.5 x 70
Rec. Tensile Load (kN)	0.08	0.39	0.9	0.03	0.08	0.12
Max Rec. Load (kg)	8	39	90	3	8	12
Rec. Screw Ø (mm)	4.0 - 4.5	4.5 - 5.0	5.0 - 6.0	3.5	4.0	4.5
Min. Req. Screw Length (mm)*	30	40	50	40	50	60



Product Code	Plug Size (mm)	Pack Qty (pcs)	Carton Qty (packs)	Pallet Qty (packs)
--------------	----------------	----------------	--------------------	--------------------

TIMBAG

224411	6.0 x 30	200	5	600
224209	8.0 x 40	100	5	600
224186	10.0 x 50	70	5	600

TYPE - BAG SUB TYPE - BAG50

TIMPAC

725411	6.0 x 30	20	10	-
725209	8.0 x 40	10	10	-
725185	10.0 x 50	5	10	-

TYPE - PAK SUB TYPE - PK017

* Add thickness of fixture to 'Min required screw length.'

** We do not recommend the use of power tools when fixing to plasterboard.

Coach Screw & Nylon Plug

Zinc



BRICK

CORROSION RATING



Clean, dry & low humidity environments

A traditional heavy duty woodscrew mainly used for attaching ironmongery to timber or for use with a nylon plug into masonry.

NOTE: Thread length is 2/3 of the overall length screw. E.g. 100mm = 60mm thread.

Technical Data

Screw Size (mm)	6.0	8.0
Socket Size (mm)	10	13
Plug Ø (mm)	10.0	12.0
Drill Hole Ø (mm)*	10.0	12.0

Product Code	Screw Size (mm)	Plug Size (mm)	Pack Qty (pcs)	Carton Qty (packs)	Pallet Qty (packs)
TIMBAG					
0660CSCNB	6.0 x 60	10.0 x 50	40	5	200
0680CSCNB	6.0 x 80	10.0 x 50	30	5	150
08100CSCNB	8.0 x 100	12.0 x 60	12	5	60
TYPE - BAG			SUB TYPE - BAG06		
TIMPAC					
0660CSCNP	6.0 x 60	10.0 x 50	2	5	-
0680CSCNP	6.0 x 80	10.0 x 50	2	5	-
08100CSCNP	8.0 x 100	12.0 x 60	2	5	-
TYPE - PAK			SUB TYPE - PAK25		

Nylon Plug

Nylon



BRICK



For use with coach screws into masonry.

Technical Data

Plug Ø (mm)	6.0	8.0	10.0	12.0	14.0
Drill Hole Ø (mm)*	6.0	8.0	10.0	12.0	14.0

Product Code	Plug Size (mm)	For Screw Ø (mm)	Pack Qty (pcs)	Carton Qty (packs)	Pallet Qty (packs)
TIMBAG					
06NLBP	6.0 x 30	3.5 - 5.0	200	5	870
08NLBP	8.0 x 40	5.0 - 6.0	100	5	870
10NLBP	10.0 x 50	6.0 - 8.0	70	5	600
TYPE - BAG			SUB TYPE - BAG07		
TIMPAC					
06NLPP	6.0 x 30	3.5 - 5.0	20	10	-
08NLPP	8.0 x 40	5.0 - 6.0	10	10	-
10NLPP	10.0 x 50	6.0 - 8.0	5	10	-
12NLPP	12.0 x 60	8.0 - 10.0	2	10	-
14NLPP	14.0 x 75	10.0 - 12.0	2	10	-
TYPE - PAK			SUB TYPE - PAK13		

Metal Expansion Plugs

Yellow



BLOCK

CORROSION RATING



Clean, dry & low humidity environments

An all steel fixing for light weight aggregate blocks. Ideal for fixing in areas such as fire escape routes where regulations restrict the use of plastic anchors or plugs.

• Conforms to BS 7671:2018



All Steel Non-Flammable Fixing



Technical Data

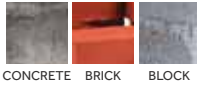
Substrate	Concrete Block 7N/mm ²		
	6.0	8.0	10.0
Plug Ø (mm)	6.0	8.0	10.0
Drill Hole Ø (mm)	6.0	8.0	10.0
Min. Embedment Depth (mm)	32	38	60
Test Screw Ø (mm)	4.5	5.0	6.0
Rec. Tensile Load (kN)	0.2	0.4	0.5
Max Rec. Load (kg)	20	40	50

Note: Drill hole size is relative to the compressive strength of the substrate. When fixing into concrete, the above drill hole sizes should be increased to prevent damage to the plug during installation.

Product Code	Size Ø x L (mm)	For Screw Ø (mm)	Pack Qty (pcs)	Carton Qty (packs)	Pallet Qty (packs)
BOX					
632MEP	6.0 x 32	4.5 - 5.0	100	18	864
838MEP	6.0 x 38	5.0 - 6.0	50	18	864
860MEP	8.0 x 60	5.0 - 6.0	50	10	500
1060MEP	10.0 x 60	6.0 - 8.0	50	10	500
TYPE - MEP			SUB TYPE - MEP01		

Express Nails

Zinc



CONCRETE BRICK BLOCK

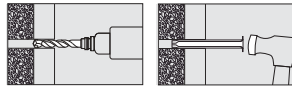
CORROSION RATING



Clean, dry & low humidity environments



An underestimated rapid hammer-set anchor for concrete and masonry, ideal for interior timber-work such as battens and frames.



Drill required diameter hole

Hammer nail through fixture

Technical Data

Substrate	Concrete		Fletton Brick		Cheshire Brick		Class B Eng. Brick	
	≥ 25N/mm ²		30N/mm ²		45N/mm ²		75N/mm ²	
Size Ø (mm)	6.0	8.0	6.0	8.0	6.0	8.0	6.0	8.0
Drill Hole Ø (mm)	6.0	8.0	6.0	8.0	6.0	8.0	6.0	8.0
Fixture Clearance Hole Ø (mm)	7.0	9.0	7.0	9.0	7.0	9.0	7.0	9.0
Min. Embed. Depth (mm)	30	40	30	40	30	40	30	40
Min. Drill Hole Depth (mm)	40	50	40	50	40	50	40	50
Rec. Tensile Load (kN)	0.52	1.50	0.48	0.61	0.29	0.53	0.28	0.62
Max Rec. Load (kg)	52	150	48	61	29	53	28	62

28-150KG

Product Code Size (mm) MFT* (mm) Pack Qty (pcs) Carton Qty (packs) Pallet Qty (packs)

BOX					
00650EN	6.0 x 50	20	200	8	240
00660EN	6.0 x 60	30	100	10	300
00680EN	6.0 x 80	50	100	10	300
00870EN	8.0 x 70	30	100	10	300
00890EN	8.0 x 90	50	50	18	648
08110EN	8.0 x 110	70	50	10	300
08130EN	8.0 x 130	90	50	10	300
08150EN	8.0 x 150	110	50	8	240
08180EN	8.0 x 180	140	50	8	240
TYPE-EXNO					SUB TYPE-EXN01

TIMBAG					
00660ENB	6.0 x 60	30	90	5	600
00680ENB	6.0 x 80	50	70	5	600
00890ENB	8.0 x 90	50	45	5	600
08110ENB	8.0 x 110	70	35	5	600
08150ENB	8.0 x 150	110	30	5	600
TYPE-BAG					SUB TYPE-BAG32

TIMPAC					
00660ENP	6.0 x 60	30	8	5	-
00680ENP	6.0 x 80	50	6	5	-
00890ENP	8.0 x 90	50	6	5	-
08110ENP	8.0 x 110	70	4	5	-
08130ENP	8.0 x 130	90	6	5	-
TYPE-PAK					SUB TYPE-PAK73

*MFT = MAX FIXTURE THICKNESS

Wirehangers

Zinc



CONCRETE

CORROSION RATING



Clean, dry & low humidity environments



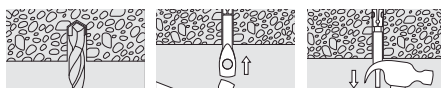
All Steel Non-Flammable Fixing

Specifically designed for use in the suspended ceiling industry when securing suspension wires to concrete beams.

• Conforms to BS 7671:2018

188KG

Technical Data	
Substrate	Concrete ≥ 25N/mm ²
Size Ø (mm)	6.0
Drill Hole Ø (mm)	6.0
Embedment Depth (mm)	45
Min. Embedment Depth (mm)	50
Rec. Tensile Load (kN)	1.88
Max Rec. Load (kg)	188



Drill required diameter hole

Lightly tap the anchor into the hole

Set anchor using a claw hammer

Product Code Size Ø x L (mm) Eye Ø (mm) Pack Qty (pcs) Carton Qty (packs) Pallet Qty (packs)

BOX					
0660WH	6.0 x 60	6.3	100	18	648
TYPE - WHG					SUB TYPE - WHG01

Ceiling Anchors

Zinc



CONCRETE

CORROSION RATING

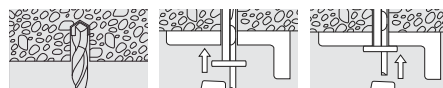


Clean, dry & low humidity environments

A rapid light duty hammer-set anchor for attaching sheet metal, plastic or wood to concrete or masonry. Made from steel making it ideal for overhead applications.

72KG

Technical Data	
Substrate	Concrete ≥ 25N/mm ²
Size Ø (mm)	6.0
Drill Hole Ø (mm)	6.0
Fixture Clearance Hole Ø (mm)	6.5
Min. Embedment Depth (mm)	35
Min Drill Hole Depth (mm)	45
Rec. Tensile Load (kN)	0.72
Max Rec. Load (kg)	72



Drill required diameter hole

Insert fixing through attachment

Hammer wedge into anchor to secure

Product Code Size Ø x L (mm) MFT (mm) Pack Qty (pcs) Carton Qty (packs) Pallet Qty (packs)

BOX					
0640CAM	6.0 x 40	5	100	10	300
0665CAM	6.0 x 65	30	100	8	240
TYPE - CAM					SUB TYPE - CAM01
					MFT = Max Fixture Thickness.

Vertical Flange Clips

Yellow



High strength vertical flange clip for fixing suspended wire and lighting to steel purlin.

Must only be used in a vertical position

72KG

Technical Data	
Size (mm)	20 x 42
Max Rec. Load (kg)	72

Product Code Size W x L (mm) Hole Ø (mm) Pack Qty (pcs) Carton Qty (packs) Pallet Qty (packs)

BOX					
VFC2042	20 x 42	6.5	100	10	500
TYPE - WHG					SUB TYPE - WHG02

Ceiling Angle Brackets

Galvanised Steel



Versatile bracket most commonly used for installing suspended ceiling systems. Various hole sizes allow different fixings to be used.

Product Code Size L x W x H (mm) Hole Ø (mm) T (mm) Pack Qty (pcs) Carton Qty (packs) Pallet Qty (packs)

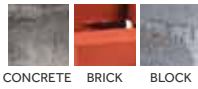
BOX						
25ABC	25 x 25 x 22	4.5 & 7.0	1.0	100	18	864
TYPE - WHG						SUB TYPE - WHG03

Insulation Fixings



Metal Insulation Fixings

Zinc



CORROSION RATING

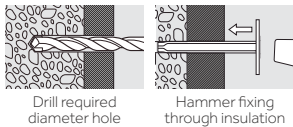


Clean, dry & low humidity environments

Designed to anchor insulation material to concrete and masonry substrate materials.

20KG

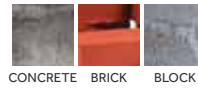
Technical Data	
Substrate	Concrete ≥ 25N/mm ²
Type	Metal
Drill Hole Ø (mm)	8.0
Min. Embedment Depth (mm)	50
Min. Drill Hole Depth (mm)	60
Rec. Tensile Load (kN)	0.20
Max Rec. Load (kg)	20



Product Code	Size Ø x L (mm)	Max. Fixture Thickness (mm)	Pack Qty (pcs)	Carton Qty (packs)	Pallet Qty (packs)
BAG					
MIF60	8.0 x 60	10	100	6	240
MIF90	8.0 x 90	40	100	4	160
MIF110	8.0 x 110	60	100	3	120
MIF140	8.0 x 140	90	100	3	120
MIF170	8.0 x 170	120	50	5	200
MIF200	8.0 x 200	150	50	4	160
MIF250	8.0 x 250	200	50	5	200
MIF300	8.0 x 300	250	50	5	200
TYPE - TAF			SUB TYPE - TAF01		

Plastic Insulation Fixings

Plastic

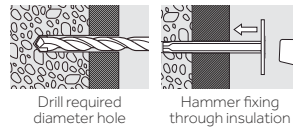


One piece impact resistant copolymer.

Note: Once installed, the head of the fixing should be taped and sealed to avoid any contact with wet plaster. Failure to do so may result in surface damage.

15KG

Technical Data	
Substrate	Concrete ≥ 25N/mm ²
Type	Plastic
Drill Hole Ø (mm)	8.0
Min. Embedment Depth (mm)	40
Min. Drill Hole Depth (mm)	50
Rec. Tensile Load (kN)	0.15
Max Rec. Load (kg)	15



Product Code	Size Ø x L (mm)	Max. Fixture Thickness (mm)	Pack Qty (pcs)	Carton Qty (packs)	Pallet Qty (packs)
BAG					
PIF50	8 x 50	10	100	10	240
PIF70	8 x 70	30	100	10	240
PIF90	8 x 90	50	100	8	192
PIF110	8 x 110	70	100	8	192
PIF130	8 x 130	90	100	8	192
TYPE - TAF			SUB TYPE - TAF01		

Metal Insulation Discs

Zinc



MID35



MID70



MID80

Large diameter head for use with screws to hold insulation material to battens. Also used for ceiling crack repairs.

Note: Once installed, the head of the fixing should be taped and sealed to avoid any contact with wet plaster. Failure to do so may result in surface damage.

Provides a larger surface area when using metal insulation fixings to hold lighter or softer insulation to masonry. Simply slide the fixing through prior to installation. Use with Metal insulation fixings. Can also be used with large gauge and long screws for fixing insulation to timber

NEW

Stainless Steel



MID36SS

Large diameter head for use with countersunk screws to hold insulation material to battens. Stainless steel material for improved corrosion resistance.

Product Code	Ø (mm)	Hole Size Ø (mm)	Pack Qty (pcs)	Carton Qty (packs)	Pallet Qty (packs)
BOX					
Zinc					
MID35	35	5.0	100	35	840
MID70	70.0	10.0	100	16	384
MID80	85.0	12.0	50	16	384
Stainless Steel					
MID36SS	36	5.5	100	35	840
TYPE - TAF			SUB TYPE - TAF01		

Plastic Cover Cap For Metal Insulation Fixings



For aesthetics, where metal insulation fixing heads are left exposed after installation.

Product Code	Ø (mm)	Pack Qty (pcs)	Carton Qty (packs)	Pallet Qty (packs)
BAG				
MIFC	38.0	100	25	300
TYPE - TAF		SUB TYPE - TAF01		

Metal Oval Stress Plate

Zinc



Frequently used with long screws to attach insulation material to timber. Oval type for use in softer materials, accommodates countersunk screws and recesses itself into insulation for a flush finish.

Note: Once installed, the head of the fixing should be taped and sealed to avoid any contact with wet plaster. Failure to do so may result in surface damage.

Product Code	Size (mm)	Hole Ø (mm)	Pack Qty (pcs)	Carton Qty (packs)	Pallet Qty (packs)
BOX					
MID8240	82 x 40	6.5	50	16	384
TYPE - TAF		SUB TYPE - TAF01			

Concrete & Masonry Fixings



Zamac Nail In Anchors

Zinc

CORROSION RATING

1 2 3 4 5

Clean, dry & low humidity environments

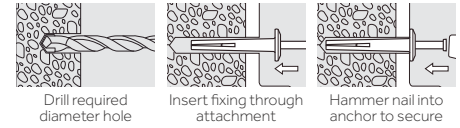
70KG

Technical Data

Substrate	Concrete ≥ 25N/mm ²
Size Ø (mm)	6.0
Drill Hole Ø (mm)	6.0
Fixture Clearance Hole Ø (mm)	6.5
Min. Embedment Depth (mm)	25
Min Drill Hole Depth (mm)	35
Rec. Tensile Load (kN)	0.70
Max Rec. Load (kg)	70

A rapid light duty hammer-set anchor for attaching sheet metal, plastic or wood to concrete or masonry.

Note: Not recommended for overhead applications



Product Code	Size (mm)	Max. Fixture Thickness (mm)	Pack Qty (pcs)	Carton Qty (packs)	Pallet Qty (packs)
BOX					
0630ZNA	6.0 x 30	5	100	10	300
0640ZNA	6.0 x 40	15	100	10	300
0650ZNA	6.0 x 50	25	100	8	240
0665ZNA	6.0 x 65	40	100	8	240

TYPE - NAA SUB TYPE - NAA01

Nylon Hammer Fixings

Zinc

CONCRETE BRICK BLOCK

CORROSION RATING

1 2 3 4 5

Clean, dry & low humidity environments

POZI

A light duty hammer-set through fixing for brick, block, stone, masonry and concrete.

17-55KG

Technical Data

Substrate	Concrete ≥25N/mm ²			Fletton Brick 30 N/mm ²			Cheshire Brick 45 N/mm ²			Class B Eng. Brick 75 N/mm ²		
	5.0	6.0	8.0	5.0	6.0	8.0	5.0	6.0	8.0	5.0	6.0	8.0
Size Ø (mm)	5.0	6.0	8.0	5.0	6.0	8.0	5.0	6.0	8.0	5.0	6.0	8.0
Drill Hole Ø (mm)	5.0	6.0	8.0	5.0	6.0	8.0	5.0	6.0	8.0	5.0	6.0	8.0
Min. Embedment Depth (mm)	25	25	40	25	25	40	25	25	40	25	25	40
Min. Drill Hole Depth (mm)	35	35	50	35	35	50	35	35	50	35	35	50
Rec. Tensile Load (kN)	0.19	0.22	0.49	0.19	0.21	0.48	0.21	0.27	0.55	0.17	0.28	0.52
Max Rec. Load (kg)	19	22	49	19	21	48	21	27	55	17	28	52

Product Code	Size (mm)	MFT (mm)	Driver Bit Size	Pack Qty (pcs)	Carton Qty (packs)	Pallet Qty (packs)
BOX						
50030HF	5.0 x 30	5	PZ2	200	20	540
50050HF	5.0 x 50	25	PZ2	200	10	288
60040HF	6.0 x 40	15	PZ2	200	10	432
60050HF	6.0 x 50	25	PZ2	200	10	288
60060HF	6.0 x 60	35	PZ2	200	10	288
60070HF	6.0 x 70	45	PZ2	200	10	288
60080HF	6.0 x 80	55	PZ2	200	10	288
80060HF	8.0 x 60	20	PZ3	100	20	192
80080HF	8.0 x 80	40	PZ3	100	10	192
80100HF	8.0 x 100	60	PZ3	100	10	192
80120HF	8.0 x 120	80	PZ3	100	10	144
80140HF	8.0 x 140	100	PZ3	100	10	144

TYPE - NHF SUB TYPE - NHF01

TIMBAG						
60040HFB	6.0 x 40	15	PZ2	135	5	600
60060HFB	6.0 x 60	35	PZ2	100	5	600
60080HFB	6.0 x 80	55	PZ2	80	5	600
80100HFB	8.0 x 100	60	PZ3	40	5	600

TYPE - BAG SUB TYPE - BAG10

TIMPAC						
60040HFP	6.0 x 40	15	PZ2	10	5	-
60060HFP	6.0 x 60	35	PZ2	10	5	-
60080HFP	6.0 x 80	55	PZ2	10	5	-
80100HFP	8.0 x 100	60	PZ3	8	5	-

TYPE - PAK SUB TYPE - PAK12

Nylon Frame Fixings

Zinc

CONCRETE BRICK BLOCK

CORROSION RATING

1 2 3 4 5

Clean, dry & low humidity environments

POZI

A versatile and reliable fixing for attaching to brick, block, stone, masonry and concrete.

20-70KG

Technical Data

Substrate	Concrete ≥25N/mm ²		Fletton Brick 30N/mm ²		Cheshire Brick 45N/mm ²		Class B Eng. Brick 75N/mm ²		Concrete Block 7N/mm ²	
	8.0	10.0	8.0	10.0	8.0	10.0	8.0	10.0	8.0	10.0
Size Ø (mm)	8.0	10.0	8.0	10.0	8.0	10.0	8.0	10.0	8.0	10.0
Drill Hole (mm)	8.0	10.0	8.0	10.0	8.0	10.0	8.0	10.0	8.0	10.0
Min. Embedment Depth (mm)	40	50	40	50	40	50	40	50	40	50
Min. Drill Hole Depth (mm)	50	60	50	60	50	60	50	60	50	60
Rec. Tensile Load (kN)	0.50	0.70	0.25	0.46	0.44	0.65	0.43	0.38	0.20	0.24
Max Rec. Load (kg)	50	70	25	46	44	65	43	38	20	24

Product Code	Size (mm)	MFT (mm)	Driver Bit Size	Pack Qty (pcs)	Carton Qty (packs)	Pallet Qty (packs)
BOX						
08080NFF	8.0 x 80	40	PZ3	100	8	192
08100NFF	8.0 x 100	60	PZ3	100	8	144
08120NFF	8.0 x 120	80	PZ3	100	8	144
10080NFF	10.0 x 80	30	PZ3	100	4	144
10100NFF	10.0 x 100	50	PZ3	100	4	192
10120NFF	10.0 x 120	70	PZ3	100	4	192
10140NFF	10.0 x 140	90	PZ3	100	4	96
10160NFF	10.0 x 160	110	PZ3	100	4	96

TYPE - NFF SUB TYPE - NFF01

TIMBAG						
08080NFB	8.0 x 80	40	PZ3	50	5	600
08100NFB	8.0 x 100	60	PZ3	40	5	600
10100NFB	10.0 x 100	50	PZ3	30	5	600
10120NFB	10.0 x 120	70	PZ3	25	5	600
10140NFB	10.0 x 140	90	PZ3	20	5	600
10160NFB	10.0 x 160	110	PZ3	15	5	600

TYPE - BAG SUB TYPE - BAG11

TIMPAC						
08080NFP	8.0 x 80	40	PZ3	5	5	-
08100NFP	8.0 x 100	60	PZ3	4	5	-
10100NFP	10.0 x 100	50	PZ3	3	5	-
10120NFP	10.0 x 120	70	PZ3	2	5	-
10140NFP	10.0 x 140	90	PZ3	2	4	96
10160NFP	10.0 x 160	110	PZ3	2	5	-

TYPE - PAK SUB TYPE - PAK13

Masonry & Concrete Screws



Ideal for fitting

- hand rails
- shelf brackets
- security lighting
- metal straps banding

Countersunk



None expansion for close to edge fixing



Serrated V-threads for optimum insertion



High-low start threads for rapid pick up

Pan Head

Rapid & Effective
Masonry & Concrete Screws

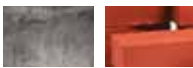


Masonry Screw - Countersunk

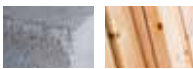
Zinc



TX DRIVE



Concrete BRICK



BLOCK WOOD

CORROSION RATING



Clean, dry & low humidity environments



- Light duty fixing ideal for ironmongery handrails & brackets
- TX25 TX Drive recess reduces wear & camming out
- Serrated V-threads to achieve optimum insertion
- Conforms to BS 7671



All Steel Non-Flammable Fixing

100-150KG

Technical Data

Substrate	Concrete ≥25N/mm ²	
Length (mm)	40-80	100
Drill Hole Ø (mm)	5.0	5.0
Min. Embedment Depth (mm)	25	37
Min. Drill Hole Depth (mm)	35	47
Rec. Tensile Load (kN)	1.00	1.50
Max Rec. Load (kg)	100	150

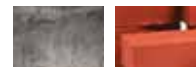
Product Code	Size (mm)	Driver Bit Size	Max. Fixture Thickness (mm)	Fixture Clearance Hole Ø (mm)	Pack Qty (pcs)	Carton Qty (packs)	Pallet Qty (packs)
BOX (DRIVER BIT INCLUDED)							
640MFCSK	6.0 x 40	TX25	15	6.5	100	18	648
660MFCSK	6.0 x 60	TX25	35	6.5	100	12	432
680MFCSK	6.0 x 80	TX25	55	6.5	100	12	432
6100MFCSK	6.0 x 100	TX25	63	6.5	100	10	360
TYPE - CON					SUB TYPE - CON04		
TIMPAC							
725157	6.0 x 40	TX25	15	6.5	12	10	-
725375	6.0 x 60	TX25	35	6.5	10	10	-
725010	6.0 x 80	TX25	55	6.5	8	10	-
725863	6.0 x 100	TX25	63	6.5	6	10	-
TYPE - PAK					SUB TYPE - PAK45		

Masonry Screw - Pan Head

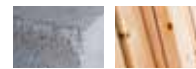
Zinc



TX DRIVE



Concrete BRICK



BLOCK WOOD

CORROSION RATING



Clean, dry & low humidity environments



- Light duty fixing ideal for ironmongery
- TX25 TX Drive recess reduces wear & camming out
- Serrated V-threads to achieve optimum insertion
- Conforms to BS 7671



All Steel Non-Flammable Fixing

100-150KG

Technical Data

Substrate	Concrete ≥25N/mm ²	
Length (mm)	40-80	100
Drill Hole Ø (mm)	5.0	5.0
Min. Embedment Depth (mm)	25	37
Min. Drill Hole Depth (mm)	35	47
Rec. Tensile Load (kN)	1.00	1.50
Max Rec. Load (kg)	100	150

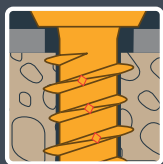
Product Code	Size (mm)	Driver Bit Size	Max. Fixture Thickness (mm)	Fixture Clearance Hole Ø (mm)	Pack Qty (pcs)	Carton Qty (packs)	Pallet Qty (packs)
BOX (DRIVER BIT INCLUDED)							
640MFPAN	6.0 x 40	TX25	15	6.5	100	18	648
660MFPAN	6.0 x 60	TX25	35	6.5	100	12	432
680MFPAN	6.0 x 80	TX25	55	6.5	100	12	576
6100MFPAN	6.0 x 100	TX25	63	6.5	100	10	360
TYPE - CON					SUB TYPE - CON05		
TIMPAC							
725500	6.0 x 40	TX25	15	6.5	12	10	-
725997	6.0 x 60	TX25	35	6.5	10	10	-
TYPE - PAK					SUB TYPE - PAK46		

Masonry & Concrete Screws

Designed to replace traditional masonry fixings



None expansion for close to edge fixing



Serrated V-threads for optimum insertion



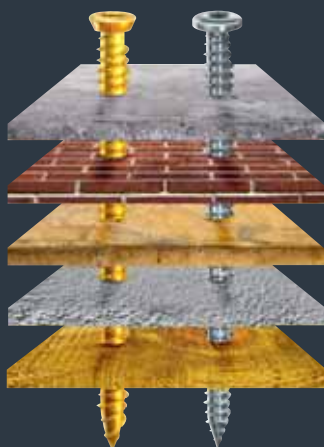
High-low start threads for rapid pick up



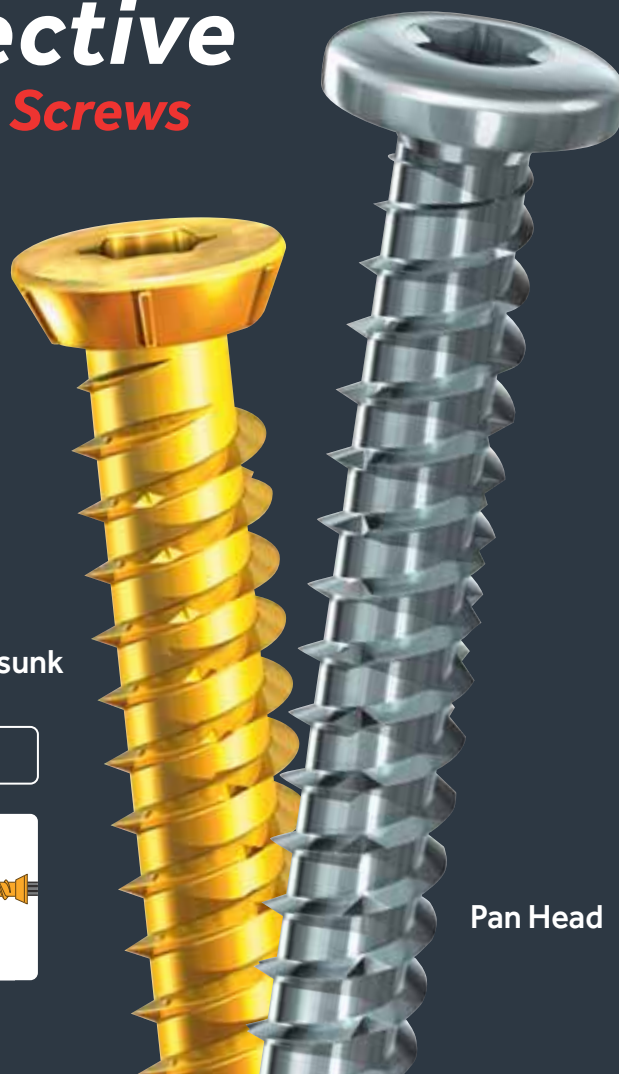
Rapid & Effective Masonry & Concrete Screws

Ideal for fixing

- Concrete
- Brick
- Stone
- Block
- Wood



Countersunk

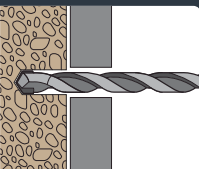


Pan Head

Install in just 2 easy steps

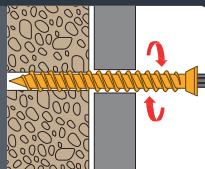
1 Drill

Drill the hole 90° to the substrate. Always over-drill the hole depth for dust/debris.




2 Fix

Using a power tool, tighten the fixing firmly against the attachment.



Concrete Screw - Countersunk

Yellow




CORROSION RATING

1 2 3 4 5

Clean, dry & low humidity environments

Zinc




CORROSION RATING

1 2 3 4 5

Clean, dry & low humidity environments

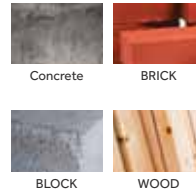
Exterior (SO)



CORROSION RATING

1 2 3 4 5

Urban & industrial areas with a low salt atmosphere



A rapid and effective light duty anchoring system for fixing into concrete, brick, stone, concrete block and wood. This through fixing provides a single solution and replaces traditional fixings such as nylon frame and hammer fixings.



• Conforms to BS 7671:2018



Technical Data

Substrate	Concrete ≥25N/mm ²		Fletton Brick 30N/mm ²		Cheshire Brick 45N/mm ²		Class B Eng. Brick 75N/mm ²	
	40-70	80-200	40-80	80-200	40-70	80-200	40-70	80-200
Length (mm)	40-70	80-200	40-80	80-200	40-70	80-200	40-70	80-200
Drill Hole Ø (mm)	6.0	6.0	6.0	6.0	6.0	6.0	6.0	6.0
Min. Embedment Depth (mm)	35	50	35	50	35	50	35	50
Min. Drill Hole Depth (mm)	45	60	40	60	40	60	40	60
Rec. Tensile Load (kN)	1.07	1.82	1.17	1.79	0.75	1.46	0.85	1.22
Max Rec. Load (kg)	107	182	117	179	75	146	85	122

Product Code	Size (mm)	Driver Bit Size	Max. Fixture Thickness (mm)	Fixture Clearance Hole Ø (mm)	Pack Qty (pcs)	Carton Qty (packs)	Pallet Qty (packs)
--------------	-----------	-----------------	-----------------------------	-------------------------------	----------------	--------------------	--------------------

YELLOW							
BOX (TX30 DRIVER BIT INCLUDED)							
00040TCON	7.5 x 40	TX30	5	8.0	100	18	648
00050TCON	7.5 x 50	TX30	15	8.0	100	12	432
00060TCON	7.5 x 60	TX30	25	8.0	100	10	360
00070TCON	7.5 x 70	TX30	35	8.0	100	10	360
00080TCON	7.5 x 80	TX30	30	8.0	100	10	360
00090TCON	7.5 x 90	TX30	40	8.0	100	10	360
00100TCON	7.5 x 100	TX30	50	8.0	100	10	360
00110TCON	7.5 x 110	TX30	60	8.0	100	10	360
00120TCON	7.5 x 120	TX30	70	8.0	100	8	288
00130TCON	7.5 x 130	TX30	80	8.0	100	8	288
00150TCON	7.5 x 150	TX30	100	8.0	100	8	288
00180TCON	7.5 x 180	TX30	130	8.0	100	6	216
00200TCON	7.5 x 200	TX30	150	8.0	100	6	216

TIMBAG							
00050TCONB	7.5 x 50	TX30	15	8.0	100	5	
00060TCONB	7.5 x 60	TX30	25	8.0	85	5	
00070TCONB	7.5 x 70	TX30	35	8.0	75	5	
00080TCONB	7.5 x 80	TX30	30	8.0	65	5	
00100TCONB	7.5 x 100	TX30	50	8.0	55	5	
00120TCONB	7.5 x 120	TX30	70	8.0	45	5	
00150TCONB	7.5 x 150	TX30	100	8.0	30	5	

TIMPAC							
00050TCONP	7.5 x 50	TX30	15	8.0	8	10	
00060TCONP	7.5 x 60	TX30	25	8.0	6	10	
00070TCONP	7.5 x 70	TX30	35	8.0	5	10	
00080TCONP	7.5 x 80	TX30	30	8.0	5	10	
00100TCONP	7.5 x 100	TX30	50	8.0	4	10	
00120TCONP	7.5 x 120	TX30	70	8.0	3	10	
00150TCONP	7.5 x 150	TX30	100	8.0	2	10	

TYPE - CON/BAG/PAK SUB TYPE - CON01/BAG31/PAK44

Zinc							
BOX (TX30 DRIVER BIT INCLUDED)							
00080TCONZ	7.5 x 80	TX30	30	8.0	100	10	360
00100TCONZ	7.5 x 100	TX30	50	8.0	100	10	360
00120TCONZ	7.5 x 120	TX30	70	8.0	100	8	288
00150TCONZ	7.5 x 150	TX30	100	8.0	100	8	288

TYPE - CON SUB TYPE - CON03

Exterior (Silver Organic)							
BOX (TX30 DRIVER BIT INCLUDED)							
80TCONR	7.5 x 80	TX30	30	8.0	100	10	360
100TCONR	7.5 x 100	TX30	50	8.0	100	10	360
120TCONR	7.5 x 120	TX30	70	8.0	100	8	288

TYPE - CON SUB TYPE - CON02

Cover Caps (for Countersunk screws only)



Product Code	Colour	Pack Qty (pcs)	Carton Qty (packs)	Pallet Qty (packs)
BAG				
CAPW100	White	100	100	360
CAPO100	Light Oak	100	100	360
CAPM100	Mahogany	100	100	360

TYPE - CON SUB TYPE - CON01

Concrete Screw - Pan Head

Zinc



CORROSION RATING



Clean, dry & low humidity environments

A rapid and effective light duty anchoring system for fixing into concrete, brick, stone, concrete block and wood. This through fixing provides a single solution and replaces traditional fixings such as nylon frame and hammer fixings. Zinc plated with a pan head to improve clamping.

Product Code	Size (mm)	Driver Bit Size	Max. Fixture Thickness (mm)	Fixture Clearance Hole Ø (mm)	Pack Qty (pcs)	Carton Qty (packs)	Pallet Qty (packs)
BOX (TX30 DRIVER BIT INCLUDED)							
7580MF PAN	7.5 x 80	TX30	30	8.0	100	10	360
75100MF PAN	7.5 x 100	TX30	50	8.0	100	10	360
75120MF PAN	7.5 x 120	TX30	70	8.0	100	8	288

TYPE - CON SUB TYPE - CON03

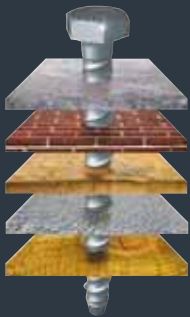
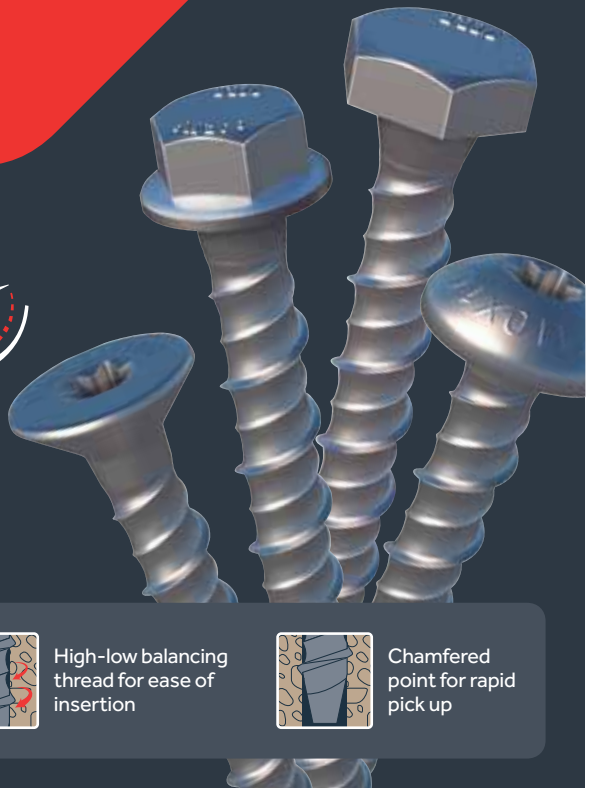
Multi-Fix Bolt

Heavy Duty Anchor

Silver organic plating to give ultimate corrosion protection

Rapid & Effective

Heavy Duty Anchor



Fixing for:

- Concrete
- Brick
- Stone
- Block
- Wood



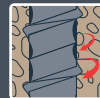
Kesternich test
3 cycles



Salt Spray
400 hours



Non-expansion
for close to
edge fixing



High-low balancing
thread for ease of
insertion



Chamfered
point for rapid
pick up

Exterior

Hex Head

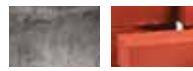
Countersunk

Pan Head



HEX

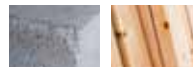
TX DRIVE



Concrete



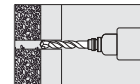
BRICK



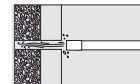
BLOCK



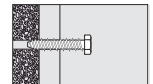
WOOD



Drill hole to
substrate. Always
drill to the stated
hole depth.



Clean the
hole by
blowing out
the Debris.



Screw the bolt into
the hole with slight
pressure to the bolt.

This stress free, non-expansion through fixing is the new solution for heavy duty anchoring into concrete, brick, stone, wood and concrete block replacing the need for traditional anchors such as throughbolts, shield, sleeve and drop-in anchors.



- Designed to replace traditional expansion anchors
- micro plating (Nano) technology gives a higher resistance to corrosion
- High low parallel threads for ease of insertion and high pull out values
- Removable & adjustable non expansion through fixing
- Conforms to BS 7671:2018

CORROSION RATING



Urban & industrial areas with a low salt atmosphere



Technical Data

Substrate	Concrete ≥25N/mm ²					Fletton Brick 30N/mm ²			Cheshire Brick 45N/mm ²			Class B Eng. Brick 75N/mm ²						
	6.0	8.0	10.0	12.0	16.0	6.0	8.0	10.0	6.0	8.0	10.0	6.0	8.0	10.0				
Size (mm)	6.0		8.0	10.0	12.0	16.0	6.0	8.0	10.0	6.0	8.0	10.0	6.0	8.0	10.0			
Length (mm)	50-75	100-150	All	All	All	All	-	-	-	-	-	-	-	-	-			
Drill Hole Ø (mm)	6.0	6.0	8.0	10.0	12.0	16.0	6.0	8.0	10.0	6.0	8.0	10.0	6.0	8.0	10.0			
Fixture Clearance Hole Ø (mm)	8.0	8.0	10.0	12.0	14.0	18.0	8.0	10.0	12.0	8.0	10.0	12.0	8.0	10.0	12.0			
Min. Embedment Depth (mm)	30	45	40	50	60	80	30	40	50	30	40	50	30	40	50			
Min. Over-Drill for Dust (mm)	10	10	15	20	25	35	10	15	20	10	15	20	10	15	20			
Min. Drill Hole Depth (mm)	40	55	55	70	85	115	40	55	70	40	55	70	40	55	70			
Min. Centre Spacing (mm)**	90	140	120	150	180	240	-	-	-	-	-	-	-	-	-			
Min. Edge Distance (mm)**	45	70	60	75	90	120	-	-	-	-	-	-	-	-	-			
Min. Structure Thickness (mm)	60	100	90	110	125	175	-	-	-	-	-	-	-	-	-			
Effective Embedment depth (mm)	30	45	40	50	60	80	30	40	50	30	40	50	30	40	50			
Rec. Tensile Load (kN)	2.44	6.23	3.93	8.36	5.49	12.21	8.97	13.00	13.5	2.28	2.68	3.18	1.36	2.19	3.26	3.49	4.33	-
Max Rec. Load (kg)	244	623	393	836	549	1221	897	1300	1350	228	268	318	136	219	326	349	433	-

** Centre spacings and edge distances are based on minimum embedment only.

Masonry Bolt - Hex Head

Exterior



HEX



Concrete



BRICK



BLOCK



WOOD

CORROSION RATING



Urban & industrial areas with a low salt atmosphere

Product Code	Size (mm)	Socket Size (mm)	MFT (mm)	Pack Qty (pcs)	Carton Qty (packs)	Pallet Qty (packs)
--------------	-----------	------------------	----------	----------------	--------------------	--------------------

BOX

MF650	6.0 x 50*	10	20	100	10	300
MF675	6.0 x 75*	10	45	100	6	180
MF6100	6.0 x 100*	10	55	100	6	180
MF6130	6.0 x 130*	10	85	100	6	180
MF6150	6.0 x 150*	10	105	75	6	180
MF860	8.0 x 60	15	20	100	6	180
MF875	8.0 x 75	15	35	100	6	180
MF8100	8.0 x 100	15	60	50	10	300
MF8130	8.0 x 130	15	90	50	6	180
MF8150	8.0 x 150	15	110	50	6	180
MF1060	10.0 x 60	17	10	50	10	300
MF1075	10.0 x 75	17	25	50	6	180
MF10100	10.0 x 100	17	50	50	6	180
MF10130	10.0 x 130	17	80	50	6	180
MF10150	10.0 x 150	17	100	25	6	180
MF1275	12.0 x 75	19	15	50	9	180
MF12100	12.0 x 100	19	40	25	10	300
MF12130	12.0 x 130	19	70	25	6	180
MF12150	12.0 x 150	19	90	25	6	180
MF12200	12.0 x 200	19	140	25	4	120
MF16100	16.0 x 100	27	20	10	8	240
MF16150	16.0 x 150	27	70	10	6	180

TYPE - SKU

SUB TYPE - SKU01

TIMBAG

MF650B	6.0 x 50*	10	20	64	5	600
MF860B	8.0 x 60	15	20	30	5	600
MF875B	8.0 x 75	15	35	26	5	600
MF8100B	8.0 x 100	15	60	20	5	600
MF1060B	10.0 x 60	17	10	18	5	600
MF1075B	10.0 x 75	17	25	14	5	600
MF10100B	10.0 x 100	17	50	12	5	600
MF10150B	10.0 x 150	17	100	8	5	600
MF1275B	12.0 x 75	19	15	12	5	600
MF12100B	12.0 x 100	19	40	8	5	600
MF12130B	12.0 x 130	19	70	6	5	600
MF12150B	12.0 x 150	19	90	6	5	600

TYPE - BAG

SUB TYPE - BAG32

TIMPAC

MF650PRE	6.0 x 50*	10	20	4	5	-
MF875PRE	8.0 x 75	15	35	4	5	-
MF8100PRE	8.0 x 100	15	60	4	5	-
MF1075PRE	10.0 x 75	17	25	4	5	-
MF10100PRE	10.0 x 100	17	50	2	5	-
MF10130PRE	10.0 x 130	17	80	2	5	-
MF10150PRE	10.0 x 150	17	100	2	5	-
MF12100PRE	12.0 x 100	19	40	2	5	-
MF12150PRE	12.0 x 150	19	90	2	5	-
MF16100PRE	16.0 x 100	27	20	2	5	-
MF16150PRE	16.0 x 150	27	70	2	5	-

TYPE - PAK

SUB TYPE - PAK43

MFT = MAX FIXTURE THICKNESS

* Please note: 6.0mm diameter bolts have a hex flange head.

Masonry Bolt - Countersunk

Exterior



TX DRIVE



Concrete



BRICK



BLOCK



WOOD

CORROSION RATING



Urban & industrial areas with a low salt atmosphere

Product Code	Size (mm)	Driver Bit Size	MFT (mm)	Pack Qty (pcs)	Carton Qty (packs)	Pallet Qty (packs)
--------------	-----------	-----------------	----------	----------------	--------------------	--------------------

BOX (DRIVER BIT INCLUDED)

MF860C	8.0 x 60	TX40	20	100	6	180
MF875C	8.0 x 75	TX40	35	100	6	180
MF8100C	8.0 x 100	TX40	60	50	8	240
MF1060C	10.0 x 60	TX50	10	50	8	240
MF1075C	10.0 x 75	TX50	25	50	6	180
MF10100C	10.0 x 100	TX50	50	50	6	180

TYPE - SKU

SUB TYPE - SKU02

MFT = MAX FIXTURE THICKNESS

Masonry Bolt - Pan Head

Exterior



TX DRIVE



Concrete



BRICK



BLOCK



WOOD

CORROSION RATING



Urban & industrial areas with a low salt atmosphere

Product Code	Size (mm)	Driver Bit Size	MFT (mm)	Pack Qty (pcs)	Carton Qty (packs)	Pallet Qty (packs)
--------------	-----------	-----------------	----------	----------------	--------------------	--------------------

BOX (DRIVER BIT INCLUDED)

MF860P	8.0 x 60	TX40	20	100	6	180
MF875P	8.0 x 75	TX40	35	100	4	180
MF8100P	8.0 x 100	TX40	60	50	6	300
MF1060P	10.0 x 60	TX50	10	50	6	300
MF1075P	10.0 x 75	TX50	25	50	6	180
MF10100P	10.0 x 100	TX50	50	50	6	180

TYPE - SKU

SUB TYPE - SKU03

MFT = MAX FIXTURE THICKNESS

Throughbolts

Zinc



CORROSION RATING

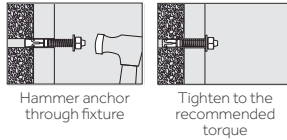
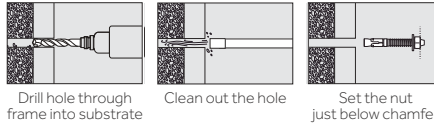


Clean, dry & low humidity environments



A versatile through fixing for use in a wide range of anchoring applications into concrete.

NOTE : If no torque wrench is available, tighten the nut 3 to 4 full turns from finger tight.



292-1115KG

Technical Data

Substrate	Concrete ≥25N/mm ²				
Size Ø (mm)	M8	M10	M12	M16	M20
Socket Size (mm)	13	17	19	24	30
Drill Hole Ø (mm)	8.0	10.0	12.0	16.0	20.0
Fixture Clearance Hole Ø (mm)	9.0	12.0	14.0	18.0	22.0
Embedment Depth (mm)	35	45	50	65	80
Min. Drill Hole Depth (mm)	45	50	60	75	90
Centre Spacing (mm)	110	140	150	200	240
Edge Distance (mm)	55	70	75	100	120
Min. Structure Thickness (mm)	70	90	100	130	160
Rec. Tightening Torque (Nm)	15	30	45	100	160
Rec. Tensile Load (kN)	2.92	4.11	7.25	8.08	11.15
Max. Rec. Load (kg)	292	411	725	808	1115

Product Code Thread Ø x L (mm) Max. Fixture Thickness (mm) Pack Qty (pcs) Carton Qty (packs) Pallet Qty (packs)

BOX					
0850TB	M8 x 50	5	100	8	216
0865TB	M8 x 65	10	100	6	162
0880TB	M8 x 80	25	50	10	360
08100TB	M8 x 100	45	50	6	162
08130TB	M8 x 130	75	50	6	162
1065TB	M10 x 65	5	50	8	216
1075TB	M10 x 75	10	50	6	162
10100TB	M10 x 100	35	50	6	162
10120TB	M10 x 120	55	50	6	162
1280TB	M12 x 80	5	50	6	162
12100TB	M12 x 100	25	25	6	162
12120TB	M12 x 120	45	25	6	162
12140TB	M12 x 140	65	25	6	162
12180TB	M12 x 180	105	25	6	162
16105TB	M16 x 105	5	25	6	162
16125TB	M16 x 125	20	25	6	162
16150TB	M16 x 150	45	15	6	162
16175TB	M16 x 175	70	15	6	162
20130TB	M20 x 130	5	10	6	162
20160TB	M20 x 160	30	10	6	162
20215TB	M20 x 215	85	8	6	162
TYPE - THB					SUB TYPE - THB01

TIMBAG					
0850TBB	M8 x 50	5	40	5	600
10100TBB	M10 x 100	35	18	5	600
12100TBB	M12 x 100	25	12	5	600
12140TBB	M12 x 140	65	10	5	600
12180TBB	M12 x 180	105	8	5	600
TYPE - BAG					SUB TYPE - BAG29

TIMPAC					
0850TBP	M8 x 50	5	4	10	-
10100TBP	M10 x 100	35	2	10	-
12100TBP	M12 x 100	25	2	10	-
12140TBP	M12 x 140	65	2	10	-
TYPE - PAK					SUB TYPE - PAK48

Drop in Anchors

Zinc



CORROSION RATING



Clean, dry & low humidity environments

An internally threaded hammer set expansion anchor for heavy duty anchoring into concrete.

Standard version can be inserted below the surface. Also known as wedge anchors.

129-935KG

Technical Data

Substrate	Concrete ≥25N/mm ²			
Size Ø (mm)	M6	M8	M10	M12
Drill Hole Ø (mm)	8.0	10.0	12.0	16.0
Embedment Depth (mm)	25	30	40	50
Min Drill Hole Depth (mm)	25	30	40	50
Centre Spacing (mm)	75	90	120	150
Edge Distance (mm)	75	90	120	150
Min Structure Thickness (mm)	100	100	100	125
Rec. Tightening Torque (Nm)	3	5	7	16
Rec. Tensile Load (kN)	1.29	2.22	4.65	9.35
Max Rec. Load (kg)	129	222	465	935

Product Code Thread Ø x L (mm) Anchor Length (mm) Min. HD (mm) FCH Ø (mm) Pack Qty (pcs) Carton Qty (packs) Pallet Qty (packs)

BOX						
06WA	M6 x 10	25	25	8.0	100	1380
08WA	M8 x 14	30	30	10.0	100	648
10WA	M10 x 15	40	40	12.0	50	816
12WA	M12 x 20	50	50	14.0	50	324
TYPE - WGA						SUB TYPE - WGA01 HD = Hole Depth. FCH = Fixture Clearance Hole.

Lipped Drop in Anchors

Zinc



CORROSION RATING



Clean, dry & low humidity environments

An internally threaded hammer set expansion anchor for heavy duty anchoring into concrete.

Lip prevents the anchor being inserted too far. Also known as wedge anchors.

222-316KG

Technical Data

Substrate	Concrete ≥25N/mm ²	
Size Ø (mm)	M8	M10
Drill Hole Ø (mm)	10.0	12.0
Embedment Depth (mm)	30	30
Min Drill Hole Depth (mm)	30	30
Centre Spacing (mm)	90	90
Edge Distance (mm)	90	90
Min Structure Thickness (mm)	100	100
Rec. Tightening Torque (Nm)	5	7
Rec. Tensile Load (kN)	2.22	3.16
Max Rec. Load (kg)	222	316

Product Code Thread Ø x L (mm) Anchor Length (mm) Min. HD (mm) FCH Ø (mm) Pack Qty (pcs) Carton Qty (packs) Pallet Qty (packs)

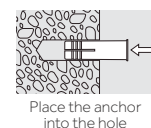
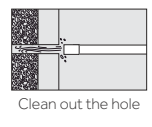
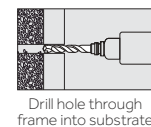
BOX						
08LWA	M8 x 14	30	30	10	100	12 720
1030LLWA	M10 x 15	30	30	12	50	12 816
TYPE - WGA						SUB TYPE - WGA01 HD = Hole Depth. FCH = Fixture Clearance Hole.

Setting Tool



Setting tool for use with standard and lipped drop in anchors.

* To suit 40mm anchor length



Product Code To Fit Thread Ø (mm) Pack Qty (pcs) Carton Qty (packs) Pallet Qty (packs)

BAG				
06WAS	M6	1	10	360
08WAS	M8	1	10	360
10WAS*	M10	1	10	360
12WAS	M12	1	10	360
TYPE - WGA				SUB TYPE - WGA03

Shield Anchors

Yellow

Shield Only



CONCRETE BRICK STONE

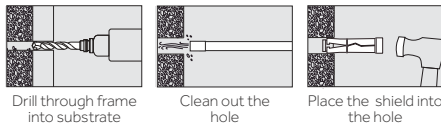
CORROSION RATING



Clean, dry & low humidity environments

Suitable for attaching a variety of fixings with metric threads such as hooks, eyes and studs.

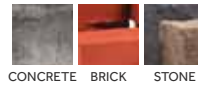
- A three segmented expansion anchor
- Torque controlled



Product Code	Thread Ø (mm)	Shield Length (mm)	Pack Qty (pcs)	Carton Qty (packs)	Pallet Qty (packs)
BOX					
06SH	M6	45	50	18	648
08SH	M8	50	50	10	300
10SH	M10	60	50	8	240
12SH	M12	75	25	8	240
TYPE - SHA			SUB TYPE - SHA01		

NB: The tensile load tests are based upon the use of 8.8 strength bolts. However, the 'Projecting Type' are supplied with 5.8 strength bolts. This should nevertheless not unduly effect the performance of the anchor, given that this is taken into consideration when selecting the product. Please consult our technical department for further advice. Installation Note: Fix in centre line of brick 35-40mm from ends and avoid top 3 courses, edge bricks, part bricks and mortar joints. Suitable in solid brickwork with sound mortar joints only up to M12 bolt diameter.

Loose Bolt



CONCRETE BRICK STONE

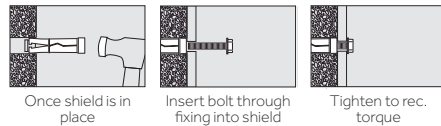
CORROSION RATING



Clean, dry & low humidity environments

Ideal for fixing through the fixture once the shield has been installed into substrate.

- Torque controlled
- Bolt Grade 8.8

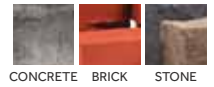


Product Code	Thread Ø (mm)	Bolt Length (mm)	MFT (mm)	Pack Qty (pcs)	Carton Qty (packs)	Pallet Qty (packs)
BOX						
0610LSH	M6	50	10	100	8	240
0625LSH	M6	65	25	50	10	300
0810LSH	M8	60	10	50	8	240
0825LSH	M8	75	25	50	8	240
0840LSH	M8	90	40	25	10	300
1010LSH	M10	70	10	25	10	300
1025LSH	M10	85	25	25	10	300
1050LSH	M10	110	50	25	8	240
1075LSH	M10	135	75	25	8	240
1210LSH	M12	90	10	10	10	300
1225LSH	M12	105	25	10	10	300
1240LSH	M12	120	40	10	10	300
1260LSH	M12	140	60	10	8	240
TYPE - SHA			SUB TYPE - SHA01			

Product Code	Thread Ø (mm)	Bolt Length (mm)	MFT (mm)	Pack Qty (pcs)	Carton Qty (packs)	Pallet Qty (packs)
TIMBAG						
0610LSHB	M6	50	10	48	5	600
0625LSHB	M6	65	25	46	5	600
0810LSHB	M8	60	10	26	5	600
0825LSHB	M8	75	25	24	5	600
0840LSHB	M8	90	40	22	5	600
1010LSHB	M10	70	10	22	5	500
1025LSHB	M10	85	25	16	5	500
1050LSHB	M10	110	50	14	5	500
1075LSHB	M10	135	75	14	5	500
1260LSHB	M12	140	60	10	5	500
TYPE - BAG			SUB TYPE - BAG30			

Product Code	Thread Ø (mm)	Bolt Length (mm)	MFT (mm)	Pack Qty (pcs)	Carton Qty (packs)	Pallet Qty (packs)
TIMPAC						
0610LSHP	M6	50	10	4	10	-
0625LSHP	M6	65	25	4	10	-
0810LSHP	M8	60	10	4	10	-
0825LSHP	M8	75	25	4	10	-
0840LSHP	M8	90	40	4	10	-
1010LSHP	M10	70	10	4	10	-
1025LSHP	M10	85	25	2	10	-
1050LSHP	M10	110	50	2	10	-
1075LSHP	M10	135	75	2	10	-
1260LSHP	M12	140	60	2	10	-
TYPE - PAK			SUB TYPE - PAK49		MFT = Max Fixture Thickness	

Projecting Bolt



CONCRETE BRICK STONE

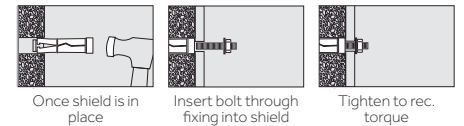
CORROSION RATING



Clean, dry & low humidity environments

The projecting stud allows the fixture to be positioned into place and then fastened secure.

- Torque controlled
- Stud Grade 5.8



Product Code	Thread Ø (mm)	Bolt Length (mm)	MFT (mm)	Pack Qty (pcs)	Carton Qty (packs)	Pallet Qty (packs)
BOX						
0810PSH	M8	70	10	50	8	240
0825PSH	M8	85	25	50	8	240
0860PSH	M8	120	60	50	8	240
1015PSH	M10	85	15	25	10	300
1030PSH	M10	100	30	25	8	300
1060PSH	M10	130	60	25	8	300
1215PSH	M12	105	15	10	10	300
1230PSH	M12	120	30	10	10	300
1275PSH	M12	165	75	10	8	240
TYPE - SHA			SUB TYPE - SHA01			

Product Code	Thread Ø (mm)	Bolt Length (mm)	MFT (mm)	Pack Qty (pcs)	Carton Qty (packs)	Pallet Qty (packs)
TIMBAG						
0825PSHB	M8	85	25	26	5	600
0860PSHB	M8	120	60	22	5	600
1015PSHB	M10	85	15	16	5	600
1030PSHB	M10	100	30	15	5	600
1060PSHB	M10	130	60	14	5	500
1230PSHB	M12	120	30	8	5	600
TYPE - BAG			SUB TYPE - BAG30			

Product Code	Thread Ø (mm)	Bolt Length (mm)	MFT (mm)	Pack Qty (pcs)	Carton Qty (packs)	Pallet Qty (packs)
TIMPAC						
0825PSHP	M8	85	25	4	10	-
0860PSHP	M8	120	60	4	10	-
1015PSHP	M10	85	15	2	10	-
1030PSHP	M10	100	30	2	10	-
1060PSHP	M10	130	60	2	10	-
1230PSHP	M12	120	30	2	10	-
TYPE - PAK			SUB TYPE - PAK49		MFT = Max Fixture Thickness	

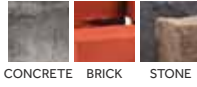
Technical Data

Substrate	Concrete ≥25N/mm2				Fletton Brick 30N/mm2				Cheshire Brick 45N/mm2				Class B Eng. Brick 75N/mm2			
	M6	M8	M10	M12	M6	M8	M10	M12	M6	M8	M10	M12	M6	M8	M10	M12
Thread Ø (mm)	10	13	17	19	10	13	17	19	10	13	17	19	10	13	17	19
Socket Size (mm)	12.0	14.0	16.0	20.0	12.0	14.0	16.0	20.0	12.0	14.0	16.0	20.0	12.0	14.0	16.0	20.0
Drill Hole Ø (mm)	8.0	10.0	12.0	14.0	8.0	10.0	12.0	14.0	8.0	10.0	12.0	14.0	8.0	10.0	12.0	14.0
Fixture Clearance Hole Ø (mm)	45	50	60	75	45	50	60	75	45	50	60	75	45	50	60	75
Embedment Depth (mm)	55	60	70	85	55	60	70	85	55	60	70	85	55	60	70	85
Min Drill Hole Depth (mm)	135	150	180	225	-	-	-	-	-	-	-	-	-	-	-	-
Centre Spacing (mm)	70	75	90	120	-	-	-	-	-	-	-	-	-	-	-	-
Edge Distance (mm)	90	100	120	150	-	-	-	-	-	-	-	-	-	-	-	-
Min Structure Thickness (mm)	5	15	30	45	3	7	15	23	3	7	15	23	3	7	15	23
Rec. Tightening Torque (Nm)	1.04	2.21	2.52	3.8	1.47	1.84	1.26	1.34	0.63	1.67	1.93	1.51	0.72	0.41	0.85	-
Rec. Tensile Load (kN)	104	221	252	380	147	184	123	134	63	167	193	151	72	41	85	-
Max Rec. Load (kg)																



Forged Eye & Shield

Yellow



CORROSION RATING



Clean, dry & low humidity environments

Complete with three segment shield anchors, a forged eye for extra strength.

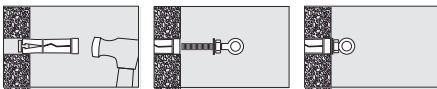
Ideal for attaching ropes or cables.

- Yellow passivated for

improved corrosion resistance

- Nut and washer included
- Grade 4.8

Please see previous page for shield installation



Once shield is in place Tighten nut while keeping eye still Tighten to rec. torque

Product Code	Thread Ø x L (mm)	Eye Ø (mm)	Pack Qty (pcs)	Carton Qty (packs)	Pallet Qty (packs)
--------------	-------------------	------------	----------------	--------------------	--------------------

TIMBAG

06EYEB	M6 x 50	8.0	18	5	870
08EYEB	M8 x 60	10.0	14	5	870

TYPE - BAG SUB TYPE - BAG30

TIMPAC

06EYEP	M6 x 50	8	2	10	-
08EYEP	M8 x 60	10	2	10	-
10EYEP	M10 x 73	12	2	10	-

TYPE - PAK SUB TYPE - PAK49

Forged Eye Only

Yellow



CORROSION RATING



Clean, dry & low humidity environments

A useful threaded eye bolt for attaching ropes or cables. Manufactured using a forging process for extra strength.

Sold without shield anchor.

Product Code	Thread Ø x L (mm)	Eye Ø (mm)	Pack Qty (pcs)	Carton Qty (packs)	Pallet Qty (packs)
--------------	-------------------	------------	----------------	--------------------	--------------------

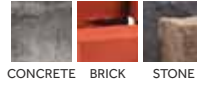
BOX

06EYE	M6 x 50	8	50	18	648
08EYE	M8 x 60	10	50	10	300
10EYE	M10 x 73	12	50	8	240
12EYE	M12 x 95	16	25	8	240

TYPE - SHA SUB TYPE - SHA01

Forged Hook & Shield

Yellow



CORROSION RATING



Clean, dry & low humidity environments

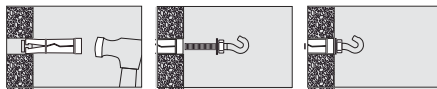
Manufactured using a forging process, to prevent opening out the hook when load is applied. Complete with three segment shield anchor.

- Yellow passivated for

improved corrosion resistance

- Nut and washer included
- Grade 4.8

Please see previous page for shield installation



Once shield is in place Tighten nut while keeping hook still Tighten until secure

Product Code	Thread Ø x Length (mm)	Pack Qty (pcs)	Carton Qty (packs)	Pallet Qty (packs)
--------------	------------------------	----------------	--------------------	--------------------

TIMBAG

06HOOKB	M6 x 50	20	5	870
08HOOKB	M8 x 60	14	5	870

TYPE - BAG SUB TYPE - BAG30

TIMPAC

06HOOKP	M6 x 50	2	10	-
08HOOKP	M8 x 60	2	10	-

TYPE - PAK SUB TYPE - PAK49

Forged Hook Only

Yellow



CORROSION RATING



Clean, dry & low humidity environments

A useful threaded hook bolt for attaching ropes or cables. Manufactured using a forging process for extra strength preventing the hook from opening out when the load is applied.

Sold without shield anchor.

Product Code	Thread Ø x L (mm)	Pack Qty (pcs)	Carton Qty (packs)	Pallet Qty (packs)
--------------	-------------------	----------------	--------------------	--------------------

BOX

06HOOK	M6 x 50	50	18	648
08HOOK	M8 x 60	50	10	300
10HOOK	M10 x 73	50	6	216
12HOOK	M12 x 90	25	8	240

TYPE - SHA SUB TYPE - SHA01

Chemical Anchor Studs

Hot Dipped Galvanised

Zinc



HDG

CORROSION RATING



Urban & industrial areas with a moderate salt atmosphere

Zinc

CORROSION RATING



Clean, dry & low humidity environments

Designed for use when fixing with chemical resins.

- Chisel point, prevents the rod turning when tightening
- External hex drive
- Embedment depth mark
- Zinc plated and passivated or galvanised
- Grade 5.8

Technical Data

Size Ø (mm)	M8	M10	M12	M16	M20
Drill Hole Ø (mm)	10	12	14	18	24
Fixture Clearance Hole Ø (mm)	10	12	14	18	24

Product Code	Size (mm)	MFT (mm)	Min. ED (mm)	Pack Qty (pcs)	Carton Qty (packs)	Pallet Qty (packs)
--------------	-----------	----------	--------------	----------------	--------------------	--------------------

BOX (NUT SETTER INCLUDED)

Hot Dipped Galvanised

08110CSG	M8 x 110	13	80	10	30	2400
10130CSG	M10 x 130	20	90	10	20	1040
12160CSG	M12 x 160	25	110	10	10	600
16190CSG	M16 x 190	35	125	10	8	304
20270CSG	M20 x 270	55	170	4	9	378

TYPE - CHZ SUB TYPE - CHZ01

Zinc

08110CS	M8 x 110	13	80	10	30	2400
10130CS	M10 x 130	20	90	10	20	1040
12160CS	M12 x 160	25	110	10	10	600
16190CS	M16 x 190	35	125	10	8	304
20270CS	M20 x 270	55	170	4	9	378

TYPE - CHZ SUB TYPE - CHZ01

TIMPAC

Zinc

08110CSP	M8 x 110	13	80	2	10	-
10130CSP	M10 x 130	20	90	2	10	-
12160CSP	M12 x 160	25	110	2	10	-

TYPE - PAK SUB TYPE - PAK50

MFT = Max Fixture Thickness. Min. ED = Min. Embedment Depth

Threaded Bar

Grade 4.8 & 8.8 available in zinc.

Stainless steel also available.

See pages 57

Chemical Resin & Accessories

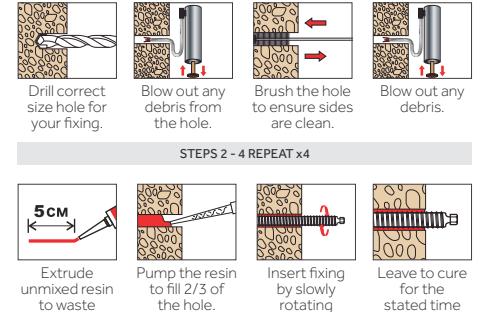


Chemical Resin



TIMCO's chemical resin range offers an effective anchoring system for fixing into concrete and masonry. The stress-free nature of this solution gives greater flexibility when anchoring closer to a substrate edge such as balustrade installation.

- Ready to use
- Uses standard tools
- Less wastage
- No leakage
- Faster & easier to use
- Low extrusion force
- T-Flow™ nozzle included
- Close edge & axial spacing



Technical Data

Resin Type	Rec. Tensile Load (Kn) (Performance Data Concrete >25N/Mm2)					
	M8	M10	M12	M16	M20	M24
Stud (5.8 Grade) Size						
PE	4.9	7.5	10.6	12.3	19.9	27.4
PESF	5.8	8.1	11.6	19.8	29.1	33.1
VESF	9.1	13.8	19.4	26.8	35.7	44.6
Embedment Depth (mm)	80	90	110	125	170	210
Cartridge Size	Approx Holes Per Cartridge (At Standard Embedment Depth)					
300ml	66	41	25	13	5	3
410ml	92	57	34	18	8	4
Gel & Cure Times	VESF / PESF / PE					
Base Material (°C)	35	25	15	5	-5	-10*
Typical Gel Time (mins)	3	5	9	20	40	50
Min. Load Time (mins)	20	30	60	90	180	240

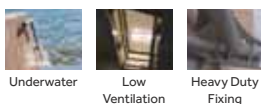
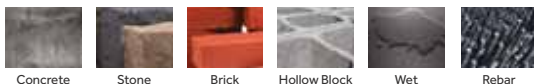
*Resin temperature must be at least 20°C

Vinylester Styrene Free

NEW SIZE



- European Technically Approved (ETA) low odour resin used in safety critical fixing
- For enclosed, poorly ventilated, damp and wet environments
- High performance resin with consistent results
- Offering exceptional tensile strength in a range of environments and conditions

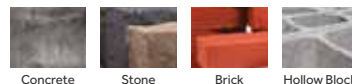


Product Code	Size	Approval	Carton Qty (packs)	Pallet Qty (packs)
CARTRIDGE (T-FLOW NOZZLE INCLUDED)				
VESF300	300ml	ETA / WRAS / CE	12	684
VESF410	410ml	ETA / WRAS / CE	12	672
TYPE - CPE			SUB TYPE - CPE01	

Polyester Styrene Free



- European Technically Approved (ETA) low odour resin used in non-safety critical fixing
- For enclosed or poorly ventilated environments

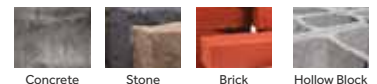


Product Code	Size	Approval	Carton Qty (packs)	Pallet Qty (packs)
CARTRIDGE (T-FLOW NOZZLE INCLUDED)				
PESF310	300ml	ETA / CE	12	684
TYPE - CPE			SUB TYPE - CPE01	

Polyester



- An economic resin ideal for day to day non-safety critical applications
- For areas that are well ventilated at the time of installation



Product Code	Size	Approval	Carton Qty (packs)	Pallet Qty (packs)
CARTRIDGE (T-FLOW NOZZLE INCLUDED)				
PE310	300ml	ETA/CE	12	684
PE410	410ml	ETA/CE	12	672
TYPE - CPE			SUB TYPE - CPE01	

Professional Resin Gun

Up to 410ml Cartridges



12:1 trigger ratio

- A 64mm heavy duty co-axial resin applicator gun.
- Twin 5mm gripper plates providing four point contact with the plunger rod.
- Non-drip mechanism

Product Code	Pack Qty (pcs)	Carton Qty (packs)
RESINGUN	1	10

PACK		
TYPE - CAC	SUB TYPE - CAC01	

Professional Sealant Gun

Up to 380ml Cartridges



12:1 trigger ratio

- A 48mm heavy duty sealant and caulking gun
- With a convenient hook end for hanging
- Swivel action barrel for easy application into tight corners
- Patented non-drip mechanism

Product Code	Pack Qty (pcs)	Carton Qty (packs)
PROGUN	1	12

PACK		
TYPE - CAC	SUB TYPE - CAC01	

Skeleton Gun

Up to 380ml Cartridges



7:1 trigger ratio

- A 48mm gun for dispensing sealants, caulk and adhesives
- 2.3mm strengthened side plates and a 6mm gripper plate
- Convenient hook end for hanging
- Riveted front cap for reinforcement and integrated cleaning pin

Product Code	Pack Qty (pcs)	Carton Qty (packs)
SKELGUN	1	24

PACK		
TYPE - CAC	SUB TYPE - CAC01	

Resin Accessories



T-Flow Nozzles Blow-out Pump Cleaning Brush

Product Code	Size (mm)	Pack Qty (pcs)	Carton Qty (packs)
--------------	-----------	----------------	--------------------

PACK			
T-Flow Mixing Nozzle			
TNOZ	To Suit All Resin Cartridges	12	100
Blow-Out Pump			
PUMP	N/A	1	24
Hole Cleaning Brush			
B13	Ø 13.0	10	50
B15	Ø 15.0	10	50
B22	Ø 22.0	10	50
TYPE - CAC		SUB TYPE - CAC02	

Plastic Sleeves



Brick Hollow Brick

Assists with fixing into hollow block or brick with chemical resins
To suit M8-M10 studs

Product Code	Size (mm)	To Suit Stud Ø (mm)	Drill Hole Size (mm)	Pack Qty (pcs)	Carton Qty (packs)
--------------	-----------	---------------------	----------------------	----------------	--------------------

BAG					
1585CPS	16.0 x 85	M8 - M10	16.0 x 90	100	25
15130CPS	16.0 x 130	M8 - M10	16.0 x 135	100	25
TYPE - CAC				SUB TYPE - CAC02	

TIMCO Adhesives & Building Chemicals

We offer a comprehensive range of tapes, adhesives, glues, sealants, foams, maintenance sprays, paints, waxes and fillers

See pages 180

